

UT-1316 Series

10/100/1000Base - T to 1000Base - SX/LX Media Converter



Product Introduction & Benefits



UT-1316

The UT-1316 media converter is specifically designed to offer fiber advantages for mission-critical networks like Telco/ISP back bones, cable operators, banking and enterprise networks. The UT-1316 can reduce network downtime and increase Quality of Service levels. The converters are completely transparent when installed, so the network performs exactly the way it would do normally-only now, it can incorporate both copper and fiber mediums.

This flexibility in cabling allows network managers to put fiber cables anywhere within a network without changing the arrangement of the copper-based Gigabit segments. Their compact size allows the converters to be wall-mounted to save space.

Several converters can be simultaneously installed by using the UT-3012 12-slot, 19" rack-mountable chassis. The UT-1316 takes advantage of intelligent connection technology to support Auto-negotiation, thereby eliminating the hassle of manually configuring or monitoring settings. This ensures plug-n-play operability.



Ordering Information :

UT- 1316 : 10/100/1000Base-T to 1000Base-SX Multi-mode, Media Converter (SC Connector, 220/550km)

UT- 1316SM : 10/100/1000Base-T to 1000Base-LX Multi-mode, Media Converter (SC Connector, 10km)

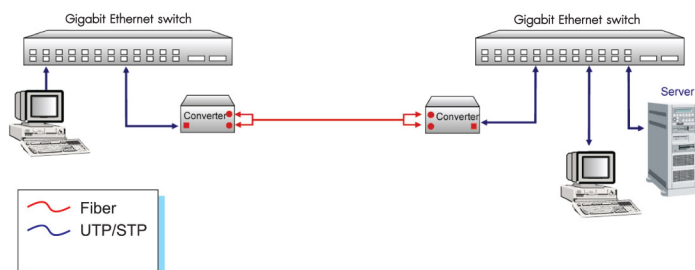
Main Features :

- One 10/100/1000 Mbps Ethernet port
- Automatic MDI/MDI-X selection on RJ-45 port
- Auto-negotiation, NWay support on RJ-45
- One 1000Base-SX/LX for Gigabit links
- Link Fault Signaling (LFS) Suitable for redundancy link
- Status LEDs for easy monitoring of device's status
- Extends distances ranging from 220/550m (multi-mode fiber) to 10km (single mode fiber)
- Store-and-forward at full wire speed
- External power supply
- FCC Class A & CE approved.
- RoHS Compliant
- Included AC power adapter 220 VAC / 12 VDC, 1A



● Standards :	IEEE 802.3 (10BASE-T Ethernet); IEEE 802.3u (100BASE-TX Fast Ethernet) IEEE 802.3ab (1000BASE-T Gigabit Ethernet) IEEE 802.3z (1000BASE-SX/LX Gigabit Ethernet)
● Port :	UTP Connector : 1x RJ-45 type Fiber Optic Connector : 1x SC types
● Max Distance :	UTP : 100 meters (Category 5/5E or better) Fiber Optic : 220/550m (Multimode) 10km (Singlemode)
● Emissions :	FCC Part 15 of Class A & CE approved
● Weight :	150 - 160 g
● Dimensions :	109.2 x 73.8 x 23.4 mm (D x W x H)
● Dip Switch :	DIP 1 - LFS : Enables / disables link fault signaling (LFS) DIP 2 - RSV : Reserve
● Power Supply :	AC 100 ~ 240V 47/63Hz Input, DC 12V 1A Output
● Power Consumption :	5.3W
● Temperature :	Operating : 0°C to 50°C Storage : -20°C to 70°C
● Humidity :	Operating : 10% to 80% RH Storage : 5% to 90% RH
● Unit LED :	1000 : Green - Illuminated when data packets are being transmitted at 1000Mbps LFS : Red - Illuminated when a break or disruption exists in copper or fiber links LNK/ACT : Green - Illuminated indicates receiving link pulses from compliant device - Flashing to indicate data packets being sent / received PWR : Green - Illuminated to indicate unit is operating under normal power

Applications :



The following illustrates typical applications for the UT-1316 series. The actual distances will depend on several factors including the quality of cables used and the terminal equipment employed.